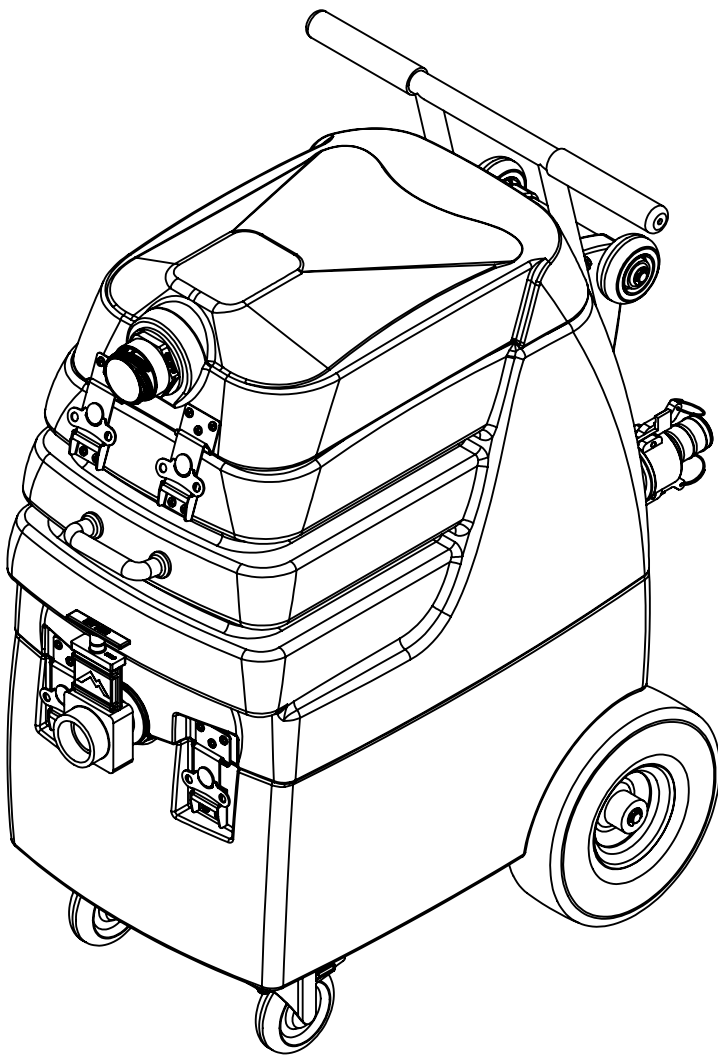


ITEM NO.	PART NO.	DESCRIPTION	QTY.
1	H135V	Cuff-Lynx, 2" male cuff x 2" mpt, vinyl	1
2	H230	screw, 10-32 x 1/2" phil pan head, s/s	61
3	H486	latch, front, set, large	5
4	P746	lid, 7000SX	1
5	G092	gasket, lid, 7000SX	1
6	H220	fitting, strain relief, cord	1
7	H225	valve, drain, 1-1/2"	1
8	H485	handle, aluminum grip, black	1
9	G052	washer, buna 1-1/8" od x 3/16" id	6
10	H211	washer, 1/4" id x 1" od, flat, s/s	6
11	H768	bolt, 1/4-20 x 3/4" serrated hex flange, zinc	2
12	P745	vac tank, 7000SX	1
13	H023	filter basket, flood hog	1
14	P631	adapter, pvc, 1-1/2" mpt x 1-1/4" fms	1
15	H314	nut, lock, 1-1/2", steel	1
16	H244	adapter, pvc, 1-1/2" fms x fmpt	1
17	PH633-11	pipe, pvc, 1-1/2"	1
18	PH627-3	vac hose, 1-1/2", wire reinforced	1
19	H217	clamp, hose, 2-1/4 dia	10
20	C388	pump out, 66 gpm, stainless, 115v	1
21	H210	washer, 1/4" flat, s/s	39
22	H256	screw, 10-32 x 3/4" phil pan head	1
23	H273	nut, kep, #10-32 zinc	26
24	H059	bracket, ETM, pump-out	2
25	H215	nut, hex, 1/4-20 s/s	1
26	H342	bolt, 1/4-20 x 1" hex head, s/s	9
27	P686	swing check valve, pump out	1
28	PH627-15	vac hose, 1-1/2", black, wire reinforced	1
29	H396	barb, 1-1/2" x 1-1/2" fpt, pump out	1
30	H207	fitting, cam & groove, male, 1-1/2"	1
31	H205	cam & groove fitting 1-1/2", female	1
32	PH633-.25	pipe, pvc, 1-1/2"	1
33	G003	filter, foam, 2", vac stack, 1/2"	1
34	G097	filter, screen mesh, 1.90" dia	1
35	P502	adapter, 1.5" pvc, fslip x fslip	1
36	H548	handle, 1" bar, s/s	1
37	G040	grip, handle, vinyl	2
38	H169	bolt, 1/4-20 x 2", hex head	10
39	H216	nut, lock, 1/4-20, nylon insert, s/s	12
40	H042	c-clip, 12mm, external	4
41	H358B	wheel, 3"	2
42	H089	axle, 9.63" x .50" dia	1
43	P609	handle, 7000SX	1
44	B103	elbow, 90 deg street, 1/4"mpt x 1/4" fpt	3
45	E373	level switch, vacuum shut-off, rear threads	3
46	B113	tee, 1/4" fpt x 1/4" fpt x 1/4" fpt	2
47	B303	nipple, 3" long x 1/4" npt x 1/4" npt	2
48	B105	bushing, brass, 3/8"mpt x 1/4"	1
49	H299	washer, 11/16" id x 1-1/2" od x .075, s/s	2
50	B210	bushing, brass, 1/2"mpt x 3/8" fpt, hex	1
51	B107	nipple, hex, 1/4"mpt x 1/4"mpt	2
52	B142	coupling, 1/4" fpt x 1/4" fpt	2
53	H668	caster, 4", black hub & gray tread	2
54	H202	bolt, 1/4-20 x 3/4" hex head, s/s	6
55	H641	plate, switch, RL1200, 7000DX	1
56	E512B	light, indicator, blue	1
57	H389	screw, 10-32 x 1/2" SHCS, alloy	1
58	H289	washer, 10 flat, s/s	2
59	E515	switch, rocker, 2 position	3
60	G068	bumper, 7/8" x 1/4" head	2
61	H501	vac support, 3 stage, 4.06"	6
62	C348	vac motor, lx, hybrid, w/inlet tube, 173 cfm, 120v	2

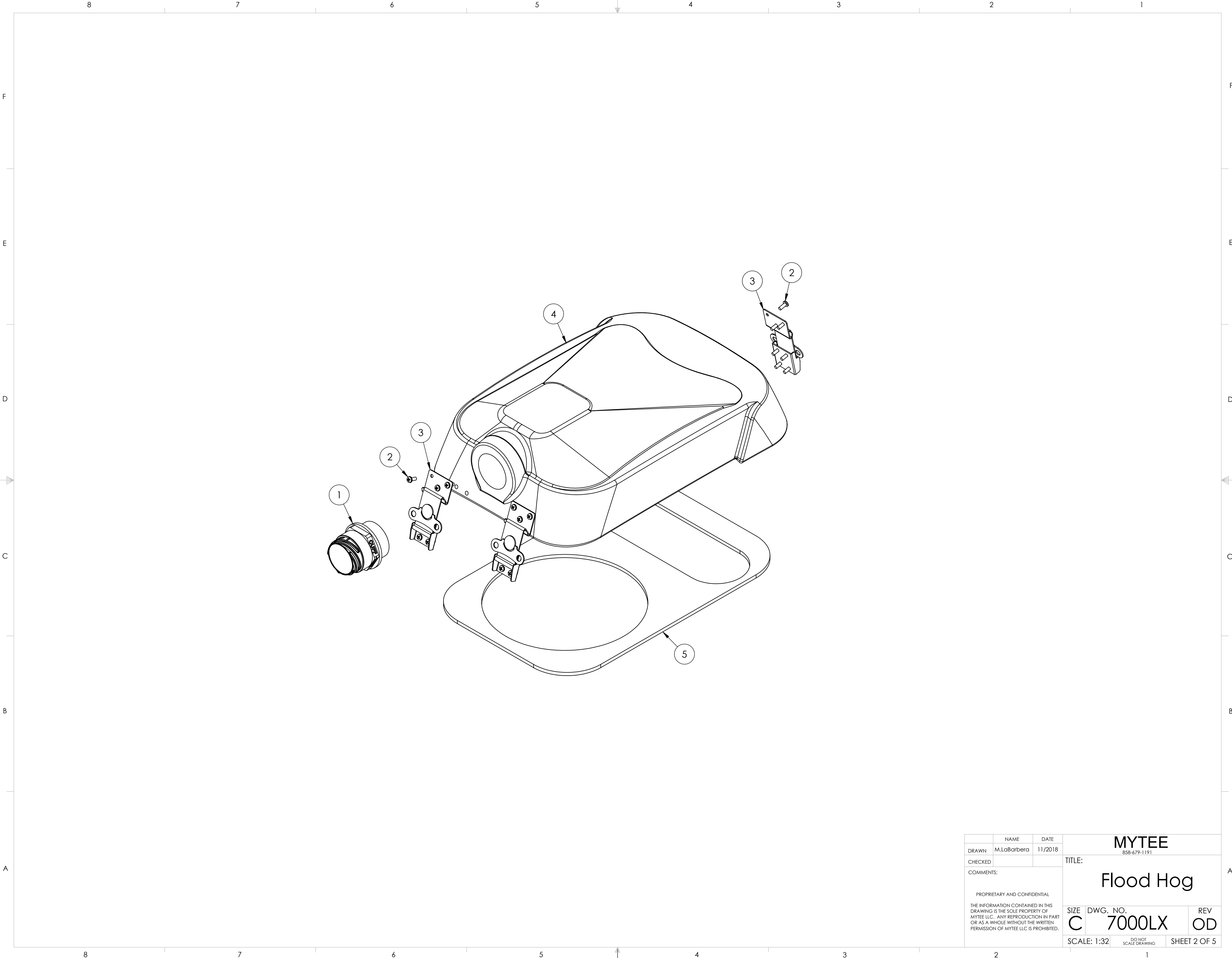
ITEM NO.	PART NO.	DESCRIPTION	QTY.
63	PH628-10	vac hose, 2", black, wire reinforced	1
64	PH628-15	vac hose, 2", black, wire reinforced	1
65	PH628-29	vac hose, 2", black, wire reinforced	1
66	P744	base, 7000SX	1
67	E360	flanged male inlet recaptacle, 230V, 20A	2
68	G165	cover, relay	3
69	E632	relay, shut-off switch, mechanical float, 115v	3
70	E564	controller, circuit light, audible	1
71	H186	screw, 10-32 x 3/4, phil, flat, countersunk, s/s, black	8
72	H487	bracket, hinge	2
73	H020	nut, lock, 2", steel	1
74	H124V	CUFF-LYNX, 2" female cuff X 2" male thread starter cuff	1
75	H254	washer, axle, cut 1/2" id	4
76	PH615K-1	sol hose, 1/2", polywire reinforced	2
77	H109	wheel, 10", foam filled	2
78	H371	axle, 18.03" x .50" dia	1

ITEMS NOT SHOWN

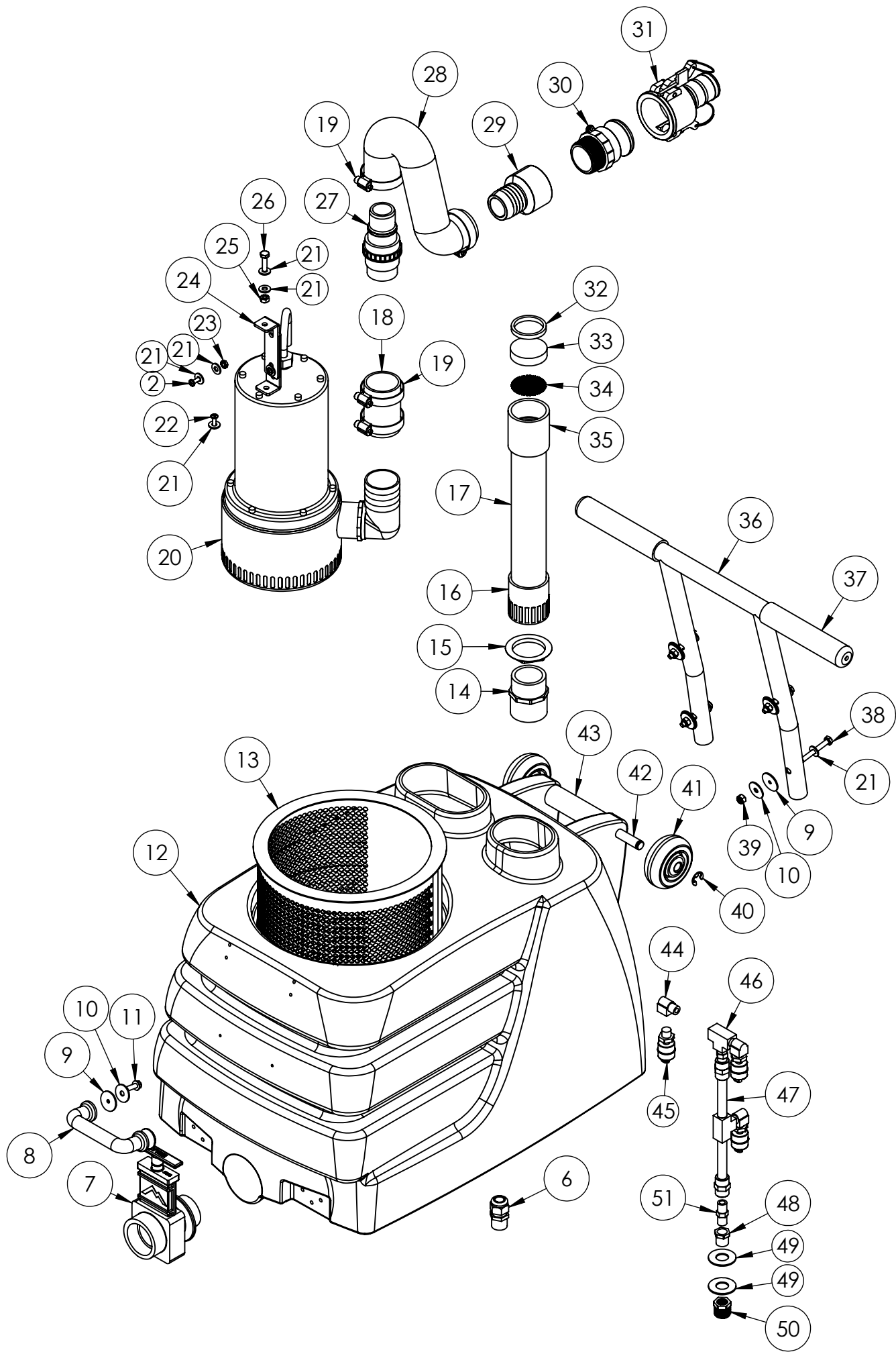
PART NO.	DESCRIPTION	QTY.
H141V	Cuff-Lynx, 2" x 1.5" reducer	1
H110V	Cuff-Lynx, 2" hose x 2" fem swivel	1
E351A	power cord, ext 50', 12/3, LA066A fem twist locks	2
A294	hose, 1-1/2" x 25', w/cam & groove fittings, pump-out	1



	NAME	DATE	MYTEE	
DRAWN	M.LoBarbera	11/2018	858-679-1191	
CHECKED			TITLE:	
COMMENTS:			Flood Hog	
PROPRIETARY AND CONFIDENTIAL THE INFORMATION CONTAINED IN THIS DRAWING IS THE SOLE PROPERTY OF MYTEE LLC. ANY REPRODUCTION IN PART OR AS A WHOLE WITHOUT THE WRITTEN PERMISSION OF MYTEE LLC IS PROHIBITED.			SIZE	REV
			C	7000LX OD
			SCALE: 1:32	DO NOT SCALE DRAWING
			SHEET 1 OF 5	



	NAME	DATE	MYTEE		
DRAWN	M.LaBarbera	11/2018	858-679-1191		
CHECKED			TITLE:		
COMMENTS: PROPRIETARY AND CONFIDENTIAL THE INFORMATION CONTAINED IN THIS DRAWING IS THE SOLE PROPERTY OF MYTEE LLC. ANY REPRODUCTION IN PART OR AS A WHOLE WITHOUT THE WRITTEN PERMISSION OF MYTEE LLC IS PROHIBITED.			Flood Hog		
			SIZE	DWG. NO.	REV
			C	7000LX	OD
			SCALE: 1:32	DO NOT SCALE DRAWING	SHEET 2 OF 5



	NAME	DATE	MYTEE		
DRAWN	M.LaBarbera	11/2018	858-679-1191		
CHECKED			TITLE:		
COMMENTS:			Flood Hog		
PROPRIETARY AND CONFIDENTIAL THE INFORMATION CONTAINED IN THIS DRAWING IS THE SOLE PROPERTY OF MYTEE LLC. ANY REPRODUCTION IN PART OR AS A WHOLE WITHOUT THE WRITTEN PERMISSION OF MYTEE LLC IS PROHIBITED.			SIZE	DWG. NO.	REV
			C	7000LX	OD
			SCALE: 1:32	DO NOT SCALE DRAWING	SHEET 3 OF 5

